

KSMVISION

BLISPECT

Blister quality inspection

Pharmaceutical industry



**Fully
automated
IT system
for different
product
formats**

Turnkey quality inspection system

Flexibility of the **Blispect** vision quality control system allows to adapt it to the needs of different types of pharma products, including:



tablets



capsules



The system is fully adapted to work in industries with restrictive standards.

Blispect stand-alone systems and modules are ready to be integrated with the blistering machine and the rejection station.

**AI-powered
software
combined with
compact hardware
can fit existing
production lines**

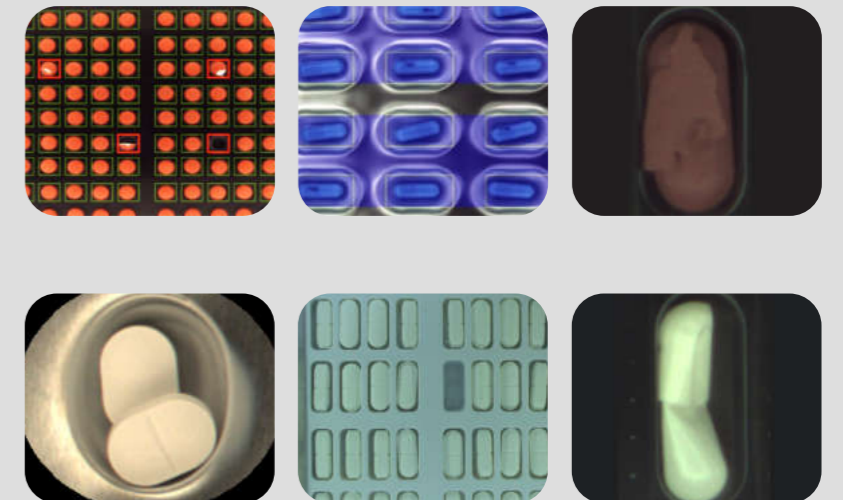
Blispect ensures full detection of:

- ✓ wrong size of tablets,
- ✓ missing tablet,
- ✓ shape defects, cracks,
- ✓ color differences,
- ✓ crumbs, blister soiling,
- ✓ foil joints.



Flexible & reliable

Only a few
of possible
defects that
Blispect detects
for you



Advantages:



- ✓ Meets the requirements of the pharmaceutical industry as part of GAMP-5 and has the Audit Trail functionality
- ✓ User-friendly interface enables quick product adding and creating new order (including reference images)
- ✓ Traceability of all products - extensive statistical functions provide in-depth insights into your production quality
- ✓ Customized lighting technology for the avoidance of reflections and false rejects



What do you gain?

- ✓ customer/ patient safety and regulatory compliance - identify and eliminate any potential risks of defects to avoid legal consequences
- ✓ cost savings - by minimizing manual inspection and reducing product waste
- ✓ changeover time savings - thanks to high flexibility of the system (new format setup process in less than 3 minutes)
- ✓ improved product quality - only products meeting highest quality standards are released
- ✓ solution to production labor shortages in the market - by transferring manual inspection to automated machine vision inspection

Different products, one software

User-friendly interface enables adding new product formats.

Training system for the new products is fully automated and takes less than 3 minutes thanks to the machine learning algorithms based on neural networks.

Options:

- ✓ Visualization of results in graphical form, including images of rejected products
- ✓ Access to extensive product statistics and quality control reports, with a division in relation to time, product, shift
- ✓ Module for remote system management and advanced data analysis
- ✓ Defined trend values and set alarms enable the line crew to take action at an earlier stage
- ✓ Tested and easy integration of a system into your production line



Adapt Blispect to your needs.

With our help, customize hardware, software, or analyzed data

Configurable interface and database

Based on the production specification system interface can be adjusted, including automatic system set-up with data upload by higher-order system (e.g. MES) and additional data upload by line operator. Data collected by the system can be automatically uploaded to higher-order system.

At KSM Vision, we've positioned ourselves as a trusted partner of the quality control industry.

Serving a diverse range of sectors – including woodworking, pharmaceuticals, cosmetics, and food – we bring the reliability and precision you need.

By fusing advanced machine learning algorithms with customized hardware, our solution isn't just an alternative to manual inspection; it's a superior approach.

We have made quality inspection systems:

- ✓ compact - easy to implement in limited space and on existing production lines,
- ✓ AI-powered with neural network architecture - enabling adaptations to the changed requirements, or product formats,
- ✓ optimized with real-world data from production lines resulting in better accuracy,
- ✓ hardware-agnostic - offering flexibility in choosing hardware components.

since
2012

Trusted by European EIT Manufacturing and backed by Intel's oneAPI for Startups, our solution is built on a foundation of reliability.

We're ISO9001 compliant, ensuring our standards meet global benchmarks for quality and trust.



Ask for details

Krzysztof Malowany

CEO / Sales

k.malowany@ksmvision.com

+48 501 483 434

KSM Vision Sp. z o.o.

welcome@ksmvision.com

Bzowa 21, 02-708 Warsaw

ksmvision.com

Poland

At **KSM** Vision, we strongly believe in the power of connecting scientific minds to run the constant change.

As an official partner of Intel's OneAPI for Startups program we are engaged in the R&D on the neural network potential. In partnership with EIT Food - Europe's leading food innovation initiative - we are co-making the food industry more sustainable, healthy and trusted, involving the quality inspection tools.



Co-funded by the
European Union



EIT Food is supported by the European Institute of Innovation and Technology (EIT), a body of the European Union.